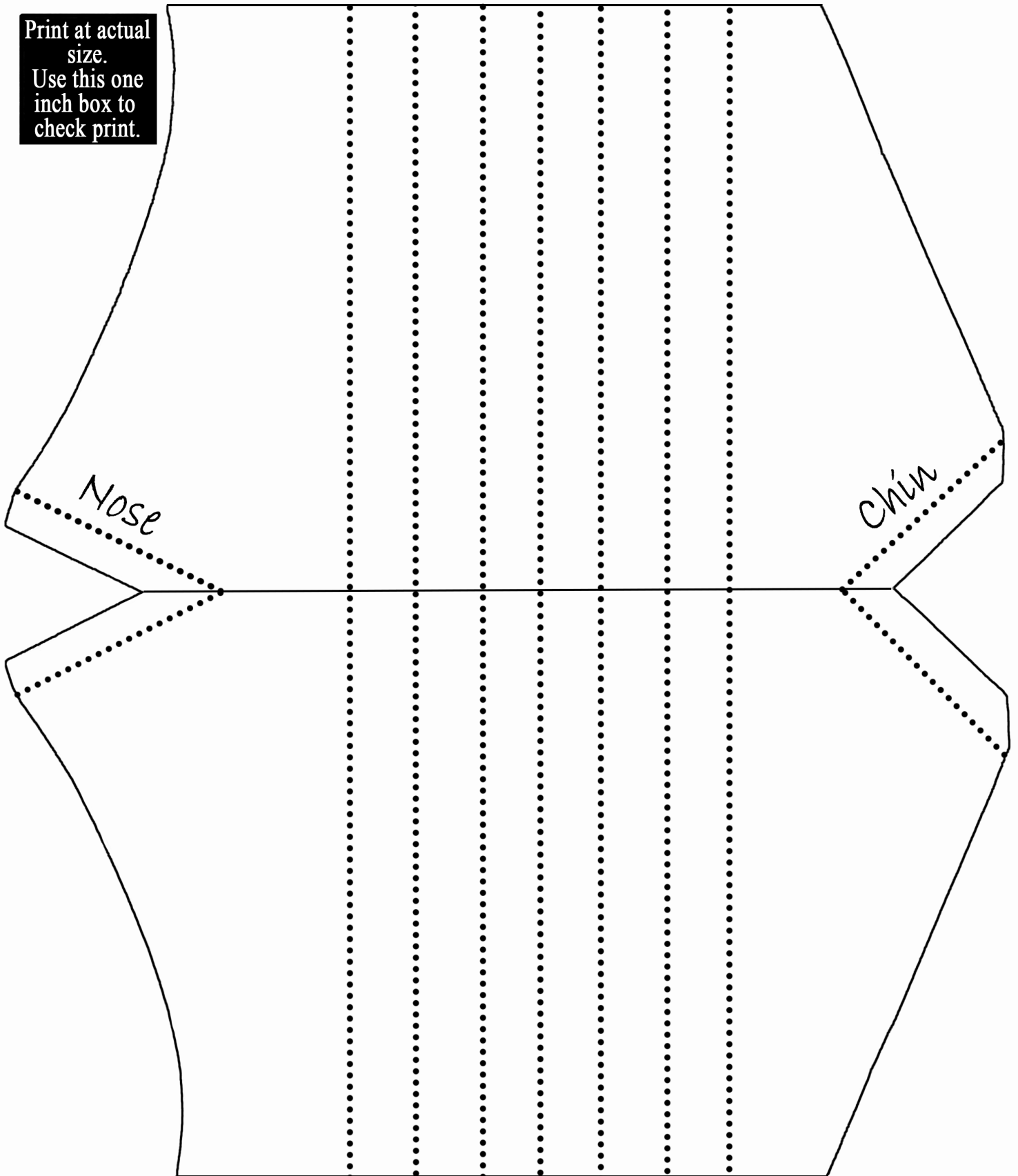


Print at actual  
size.  
Use this one  
inch box to  
check print.



## **Mask Assembly Instructions:**

Make bias tape, 100" per mask.

Cut mask pieces on fold: 2 full face pieces per mask (they are JOINED at the fold so it's really 1 piece).

Pleat, press each piece, matching finished side lengths. (Pattern default is no/short beard: 2 horizontal pleats in each piece, pointing down. If large beard: insert another 1-1/2" of length in pattern for each additional pleat.)

Fold pleated masks in half and match side lengths; repress if needed. Press side fold.

Attach bias tape to single edge, then double edge, anchoring pleats.

Stitch nose and chin seams, fold-->edge direction. Press to "same" side so they fall opposite when wrong sides of mask pieces are together. Stitch these seam allowance edges down (1 hand stitch on edge is enough) so they won't catch on inserted nose wires.

Pin mask pieces together for stability, wrong sides in.

**ADULT:**

Cut 2 ties from bias tape, 50" each. Fold in and press tie ends. Pin tie centers.

**BEBE:** Cut 2 ties from bias tape, 42" each. Fold in and press tie ends. Pin tie centers.

Match bottom tie center to mask center. Pin and sew bottom tie (50").

Match top tie center to mask center. Pin top tie. Double pin nose wire pocket edges. Have nose wire ready (8" before ends curled, or use premade inserts).

Sew top tie UNTIL at first wire pocket edge (just inside the side bias tape). With needle down, lift presser foot and rotate fabric. Lower foot. Backstitch then forward stitch, making vertical seam to hold nose wire in.

Lift foot, rotate fabric back, lower foot. Keep sewing UNTIL second wire pocket edge (just inside the side bias tape). STOP!!

Lift presser foot with needle down. Insert nose wire and work into place.

Taking care not to strike wire: rotate fabric without lifting needle, lower presser foot, make another vertical seam to hold wire in.

Lift foot, rotate fabric back, lower foot. Finish sewing tie. Snip threads. Press all seams. Done! :)